

# **SWANSON** *Speed Line Tools*

Presents  
The.....

**FRAMING**  
**WIZARD**<sup>®</sup>  
*The Folding Framing Square*

For More Information  
Please Visit Our Website

[www.SwansonToolCo.com](http://www.SwansonToolCo.com)

## **WARRANTY**

**LIMITED WARRANTY:** Swanson Tool Co., Inc. warrants all products to be free from defects in material and workmanship. Swanson's only obligation under this warranty shall be at our option to repair, replace or refund the purchase price for any product determined by Swanson to be defective. This warranty is void on any product that has been tampered with, misused, abused, improperly maintained or altered in any manner. This warranty is made in lieu of all warranties expressed or implied including but not limited to the implied warranties of merchantability and fitness for purpose. No deviations from this limited warranty are authorized.

## **TABLE OF CONTENTS**

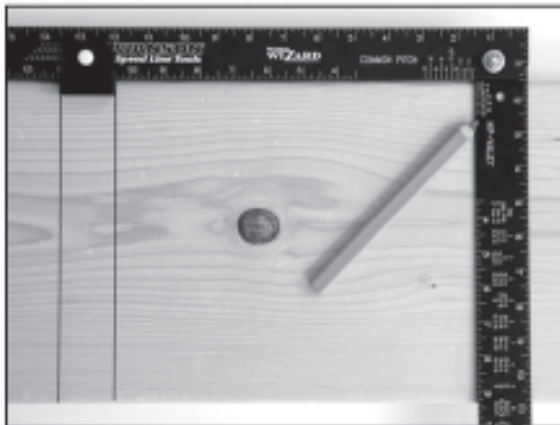
16" On Center Layout	1
12" On Center Layout	2
Common Rafter Layout	3
Hip/Valley Rafter Layout	5
Using the Chart	9
Adjusting Back To Square	11
Adjusting Arm Tension	16
Other Simple Uses	17

### **16" ON CENTER LAYOUT**



Mark first layout. Slide the Framing Wizard until tab is in first layout as shown above. Mark new layout and repeat as necessary.

### **12" ON CENTER LAYOUT**



Place the adjustable tab in the channel of the Framing Wizard where the edges line up with 10 1/2" and 12" as shown above.

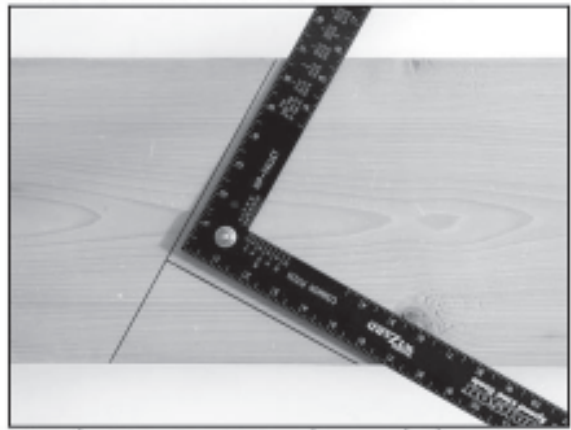
### COMMON RAFTER LAYOUT: 1



Simply adjust arm edge until it aligns with the desired common pitch on the scale. The picture above is a 10 common pitch.

3

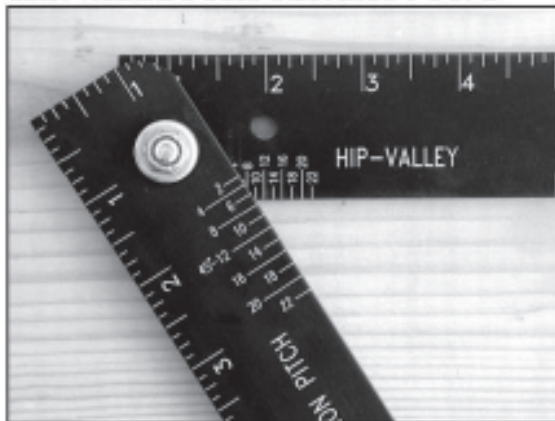
### COMMON RAFTER LAYOUT: 2



Use the Framing Wizard to mark the rafter seat pitch and plumb height.

4

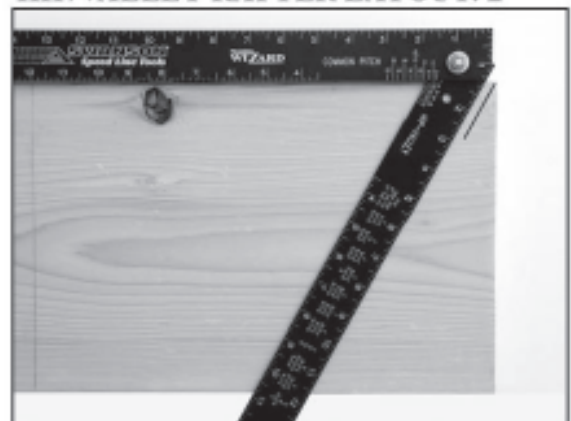
### HIP/VALLEY RAFTER LAYOUT: 1



Simply adjust arm edge until it aligns with the desired hip/valley pitch on the scale. The picture above is a 10 hip/valley pitch.

5

### HIP/VALLEY RAFTER LAYOUT: 2



To mark for the double 45-degree bevel, first place a single short mark at the corner of the rafter.

6

### HIP/VALLEY RAFTER LAYOUT: 3



Next, align the center of the hole in the arm over and the single short line as shown.

7

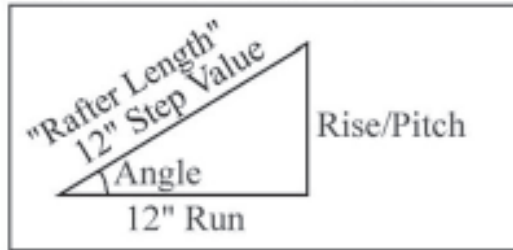
### HIP/VALLEY RAFTER LAYOUT: 4



Mark both sides of arm for the double 45-degree bevel cuts.

8

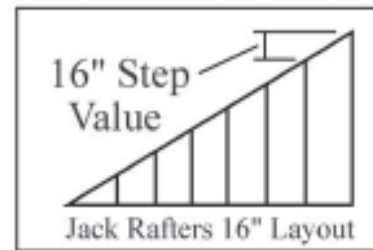
### USING THE CHART: 12" STEP



Use these values to determine the length of a common rafter. The chart gives the rafter length for each 12" of run for a given pitch. **EX:** For a run of 6' 2" with a 9" pitch, the rafter length is 6' x 15" (See 9" pitch from the Chart) = 7' 6" plus add 2" more to the rafter perpendicular to the top cut to get the complete rafter length.

9

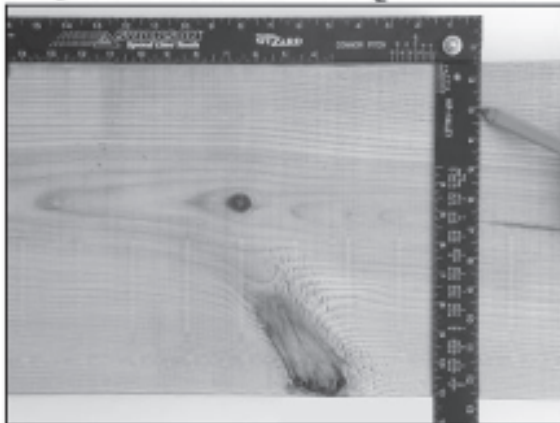
### USING THE CHART: 16" STEP



The 16" step value is the difference between two consecutive jack rafters for a given pitch. Once the common rafter length is known, simply subtract the value given for the 16" step (On Chart) from the common rafter to get the first and longest jack rafter. Continue subtracting to get each jack rafter length.

10

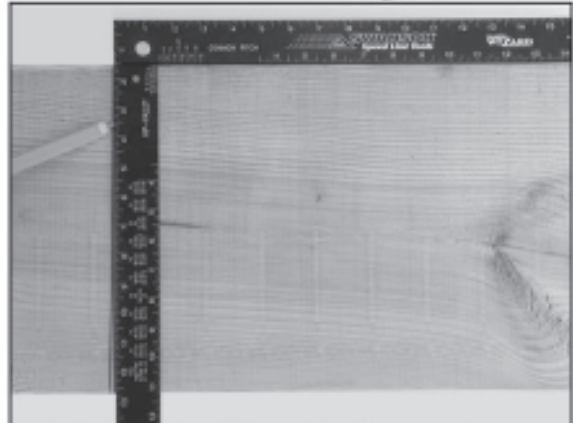
### ADJUSTING BACK TO SQUARE: 1



Open the Framing Wizard arm as far as possible, place on a wide board and draw a single line.

11

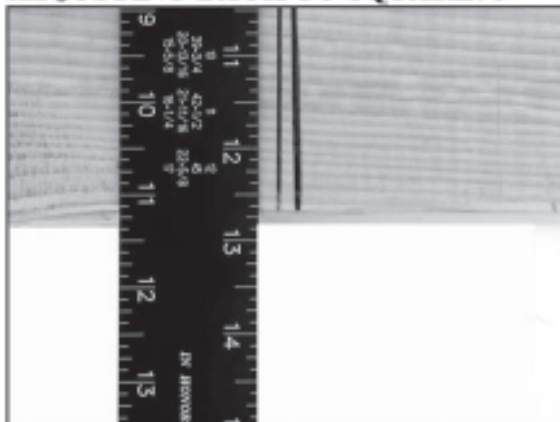
### ADJUSTING BACK TO SQUARE: 2



Flip the Framing Wizard in the opposite direction, align the top of the arm to the first line and draw a second line.

12

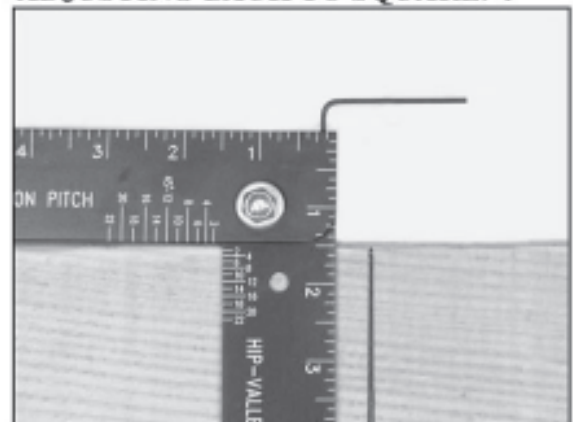
### ADJUSTING BACK TO SQUARE: 3



Check that both lines drawn are in the same place. If there is a space between the two lines, continue with adjustment.

13

### ADJUSTING BACK TO SQUARE: 4

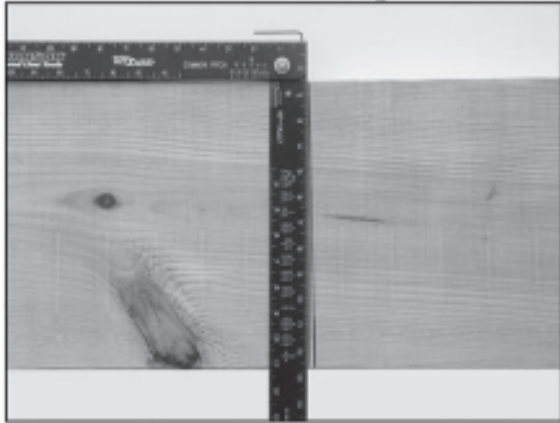


Place the included allen wrench into the setscrew and align the top of the arm to the lines drawn.

14



### ADJUSTING BACK TO SQUARE: 5



Tighten or loosen the setscrew to adjust the arm until it is centered between the two lines drawn. The Framing Wizard is now square.

15

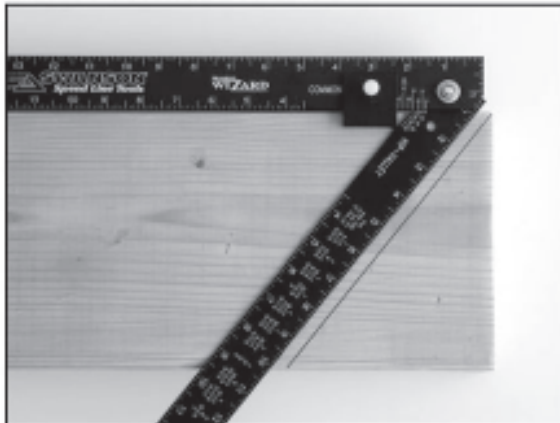
### ADJUSTING THE ARM TENSION



The amount of tension applied to the arm can be adjusted by simply turning the lock nut, which holds the arm in place.

16

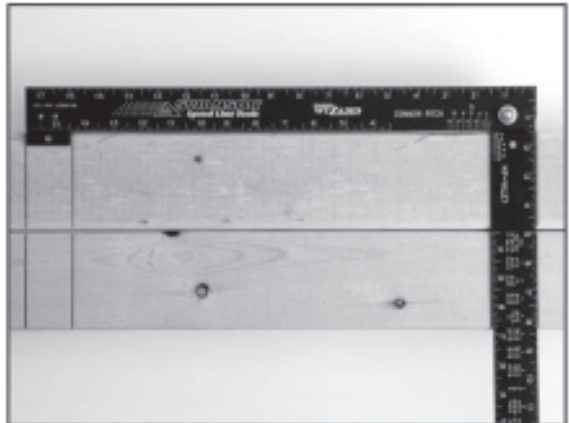
### OTHER SIMPLE USES: 1



For repeated cuts, place the adjustable tab into the channel and tighten.

17

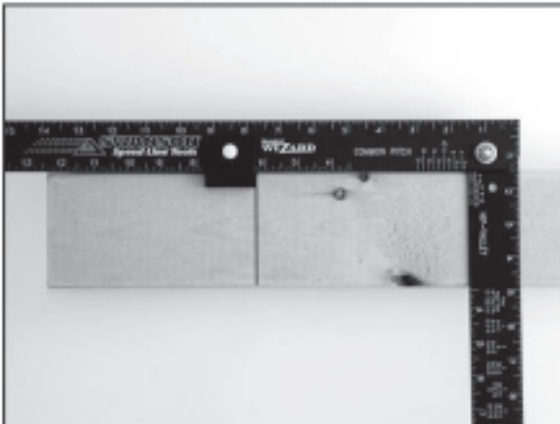
### OTHER SIMPLE USES: 2



Use the Framing Wizard to layout stud plates with ease.

18

### OTHER SIMPLE USES: 3



Use the included tab to mark multiple blocks quickly and consistently.

19

### OTHER SIMPLE USES: 4



Quickly find an existing pitch by using a level.

20

**OTHER SIMPLE USES: 5**



Use the Framing Wizard to find angles on deck boards for a perfect fit.

21

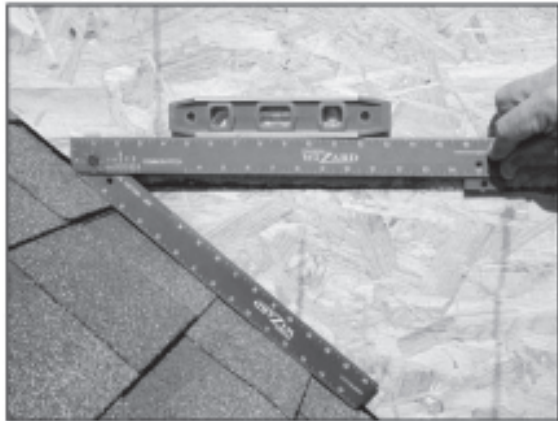
**OTHER SIMPLE USES: 6**



Measure and mark tile for a great looking finish.

22

**OTHER SIMPLE USES: 7**



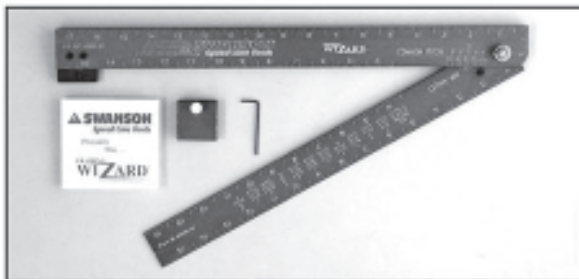
Find angles and cut siding accurately so the finished work will look great.

23

**CONGRATULATIONS !  
YOU NOW OWN THE  
REVOLUTIONARY**

**FRAMING  
WIZARD®**  
*The Folding Framing Square*

**5 TOOLS IN ONE**  
Framing Square, Tri Square,  
Miter Square, Angle Finder and Saw Guide  
**IT IS THE ONLY PORTABLE  
FRAMING TOOL FOR 16" AND 12"  
ON CENTER LAYOUT**  
**That will fit in your toolbox.**



**DISCLAIMER:** Swanson Tool Co., Inc. is not responsible for any omissions that may occur in the production of this reference

Swanson tool Co., Inc.  
211 Ontario Street  
Frankfort, Illinois 60423  
Phone: 815.469.9453  
FAx: 815.469.4575  
[www.swansontoolco.com](http://www.swansontoolco.com)